

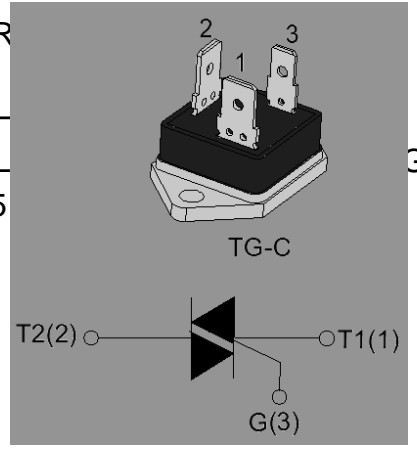


JST41T-600B 40A TRIAC

Rev.A.1.0

^ Z/Wd/KEW

7KH -67 7 % WULDF LV VXLWDEOH TRU JHQHUDO SXUSRVH
 \$& VZLWFKLQJ ,W FDQ EH XVHG DV DQ 21 2)) IXQFWLRQ
 LQ DSSOLFDWLRQ JVVXFKXODWHDW LQGXFWRQ
 PRWRU VWDUWLRQSKFDVFXFLRQWURO R
 LQ OLJKW GLP SHUHG PRQRWRVDOHUV
 D '%& -67 7 % SURYLGHV D UDWH
 YROWDJH RI 9506 FRPSO\LQJ ZL
)LOH UHI (3DFNDJH 7* & LV 5



D /E & dhZ ^

6\PERO	9DOXH	8QLW
,7 506		\$
9'50 9'50		9
,*7		P\$

^K>hd D y/DhD Z d/E'^

Parameter	Symbol	Value	Unit
6 WRUDJH MXSHFWLVRQW HLPDQJH	VWJ	7	
2 SHUDWLQJWHKSHULRQXUH UDQJH	M		7
5 HSHWLWLYH SHDN RI VWDWH YROWDJH	V_{DRM}	7	9
5 HSHWLWLYH SHDN WHYHUVH YROWDJH	V_{SM}	7	9
506 RQ VWDWHFXUUHQW 7	,7 506		\$
1RQ UHSHWLWLYH VXUJH SHDN RQ VWDWHFXUUHQW	I_{TSM}	760	\$
1RQ UHSHWLWLYH VXUJH SHDN RQ VWDWHFXUUHQW			
,W YDOXH IRU PXVLRQJ W	,W		V\$
&ULWLFDO BDWGRWDWHFXUUHQW	G, GW		\$ V
; h,*7 l +]M 7			
3HDN JDWH FXUUHQW W	,*0		\$
\$YHUDJH JDWH SRZHU GLVVLSDWLRQ	3*0		:
3HDN JDWH SRZHU	3*0		:



3 HDN SXOVH YROWDJH 7M QRQ UHSHWLWLYH RII VWDWH ^{9SS}), *		
--	--	--

> dZ/ > , Z d Z ^ d / XQOHVV RWKHUZLVH VSHFLILHG

Symbol	Test Condition	Quadrant	Value	Unit
,*7	9' 9 5		0 \$;	P \$
9*7		\$//	0 \$;	9
9*	9' 9'50 7M 5/ .	\$//	0, 1	9
/	,* ;7		0 \$;	P \$
,+	,7 P \$		0 \$;	P \$
G9 GW	99 *DWH 26HQ 7		0, 1	9 V
G9 GW F	G, GW M F \$ PV		7 0, 1	9 V
WQ	,* P \$ \$, P \$ 5, P \$		7 < 3	V
W1	7M			

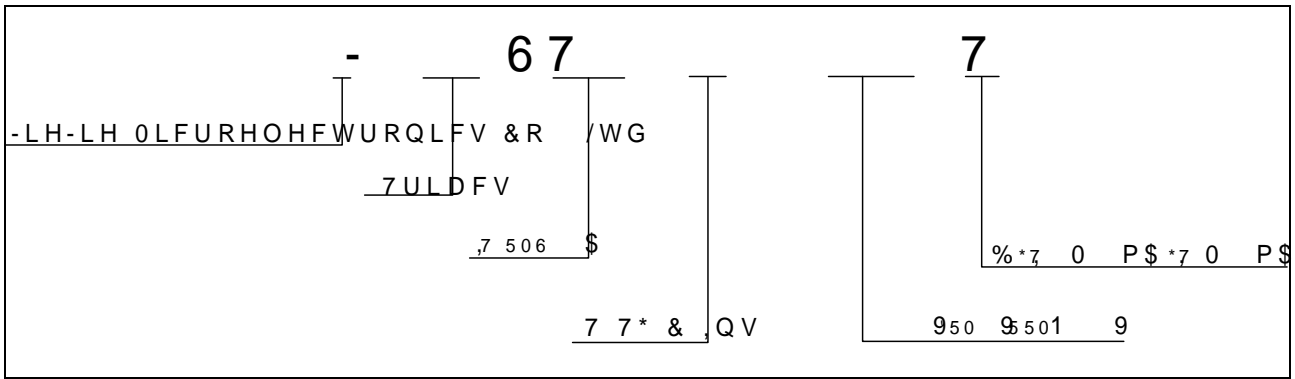
^ d d / , Z d Z / ^ d / ^

Symbol	Parameter	Value(MAX.)	Unit
970	70 \$ \$W V	M	
972	7 KUHVKROG YROWDJH	7	
5'	'\QDPLF UHVLVW DQFH	7	
,50		7M	
,550	9' 9'50 9 9550	7M	

d, ZD > Z ^ / ^ d E ^

Symbol	Parameter	Value	Unit
5WK M	F MXQFWLRQ WR FDVH \$ &		:
5WK M	D MXQFWLRQ WR DPELHQW \$ &		:

KZ Z/E' /E&KZD d/KE



la) $W^{\hat{A}} - 3"W\text{œ}€8p \cdot p^{\hat{A}} \cdot a c2\%y\hat{A} @$

D Z</E'

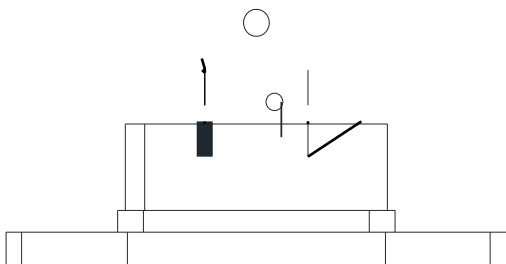


FIG.1 0D[LPXP SRZHU GLVVLSDWLRQ YH **FIG.2** 5U65RQ VWDWH FXUUHQW YH
RQ VWDWH FXUUHQW WHPSHUDWXUH

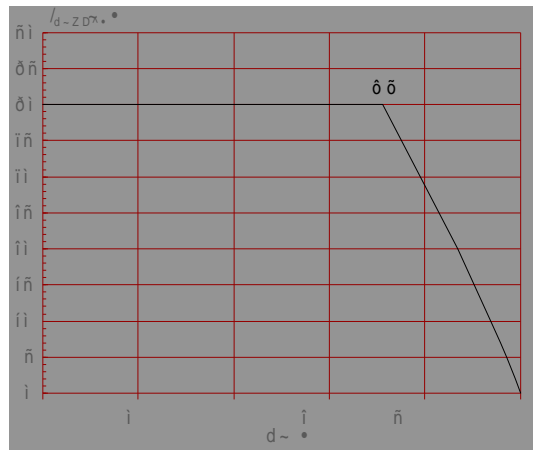
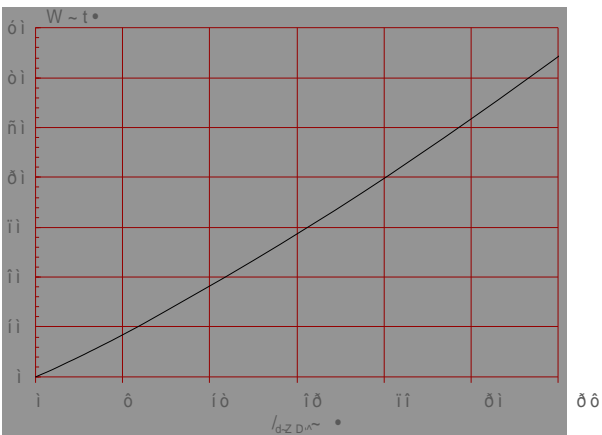
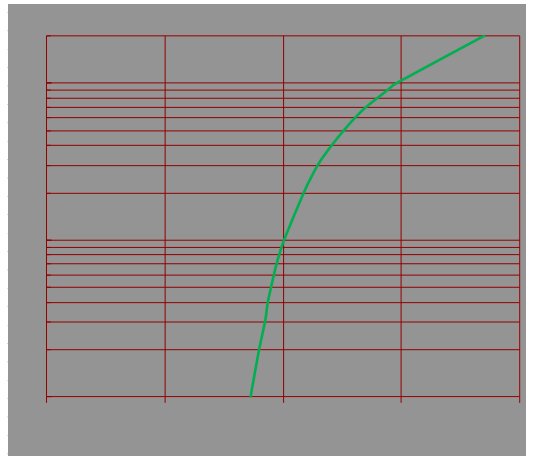
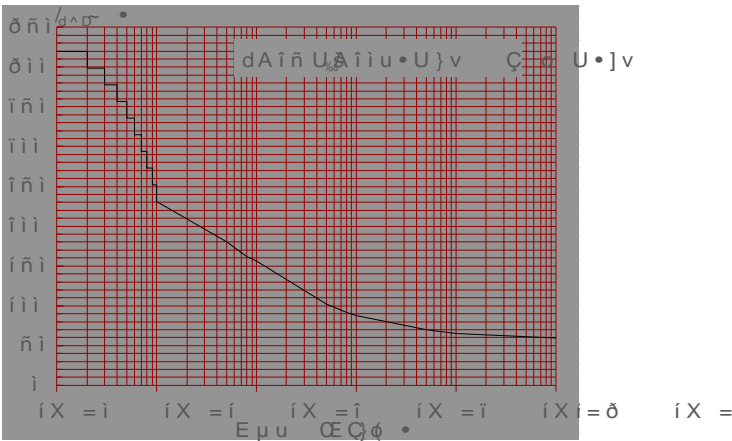


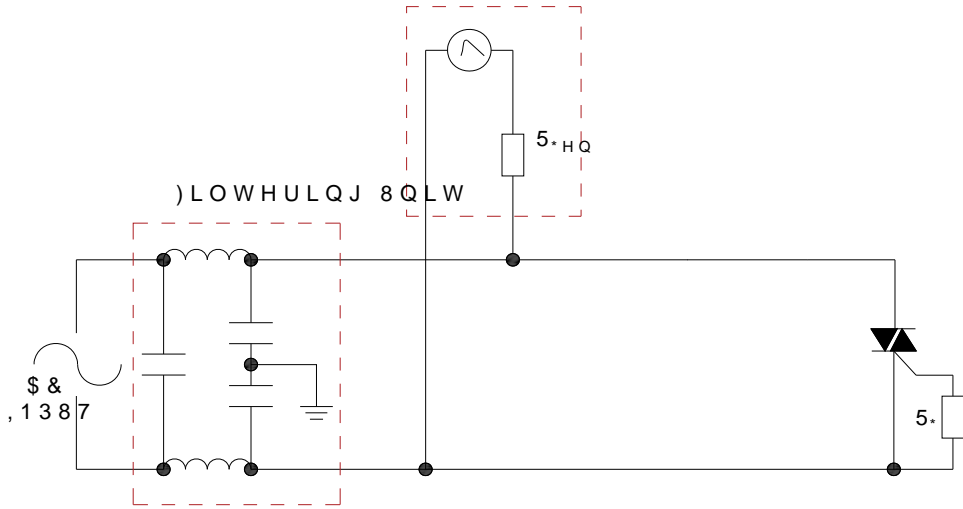
FIG.3: 6XUJH SHDN RQ VWDWH FXUUHQW **FIG.4:** 2U VWDWH FKDUDFWHULVWL
QXPEHU RI F\FOHV





), * Ö7HVW FLUFXLW IRU LQGXFWLYH DQG UMDQGDUGV O F

, (& 6WDQGDUGV
6XUJH *HQHUDWRU
6 YROWDJH VXUJH
6 FXUUHQW VXUJH



^, W/E' E ^K> Z/E' W Z D d Z ^

5HIHÉ, W R WUXFWLRQV IIRSDQVWLFOHDWLHQWLFÉHJLQHDSDYRZHE\ GLH-LH

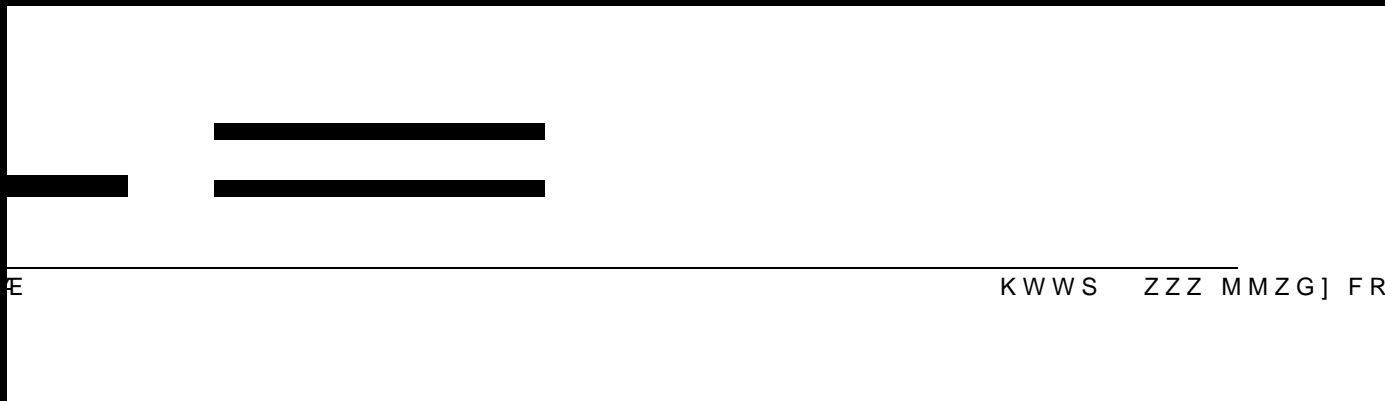


KZ Z/E' /E&KZD d/KE

Order code	Voltage V _{DRM} /V _{RRM} (V)	IGT(mA)		Package	Base qty. (pcs)	Delivery mode
		-	-			
JST41T-600B	600	50	70	TG-C(Ins)	10	Tube

Document Revision History


'DWH	5HYLVLRQ	&KDQJHV
\$SU	\$	/DVW XSGDWHG



E

KWWS ZZZ MMZG] FR



,QIRUPDWLRQ IXUQXFKHQ ILQ WKOLHGRHG WR EH DFFXUDWH D
 -LDQJVVX -LH-LH OLFURHOHFWURQLFV &W\ I/AUGWDKHV XRIQW HQTRX
 XVH ZLWKRXW FRQVKGHQBWBQURQ QRU XVH EHIRQG LW ,
 WKLV GRFXPHQWKLDQVXENZLMFVR XWR FRMLWHZKDSDDQ DU BPHPH
 VLJQH G -LDQJV&OILHVLZILWRKPWKH DJUHHPHQW
 3URGXFWV DQG LQIRULQDWKLRQ GRURXFLGHG KDYH QR LQIULQJ
 -LDQJVVX -LH-LH DVVXIPHLOQW\ UIRVSDQWIRQKHQJHHPJKWW RI W
 SDUWLHV ZKLFK PDK XNWXQIWXURKPSWB B XWRQD QK ILQGRFXPH
 VXSHUVHGHV DQG UHSODFHV DOO LQIRUPDWLRQ SUHYLRXV
 LV D UHJLVWHUHGDQJDXGLHDUN RUF-URHOWHFWURQLFV &I
 &RS\ULJKW < -LDQLFURHLOHEMURQLFV &DO ULGKWLQHWHU