



JST16C-800TW 16A TRIAC

Rev.A.1.0

DESCRIPTION:

The JST16C-800TW 16A TRIAC is a stable, high-frequency, high-current, high-voltage AC switching device. It can be used as an ON/OFF switch for AC loads. The device is designed for high reliability and long life. It is suitable for use in industrial and household applications. The device is available in a TO-220C package.

MAIN FEATURES

ABSOLUTE MAXIMUM RATINGS

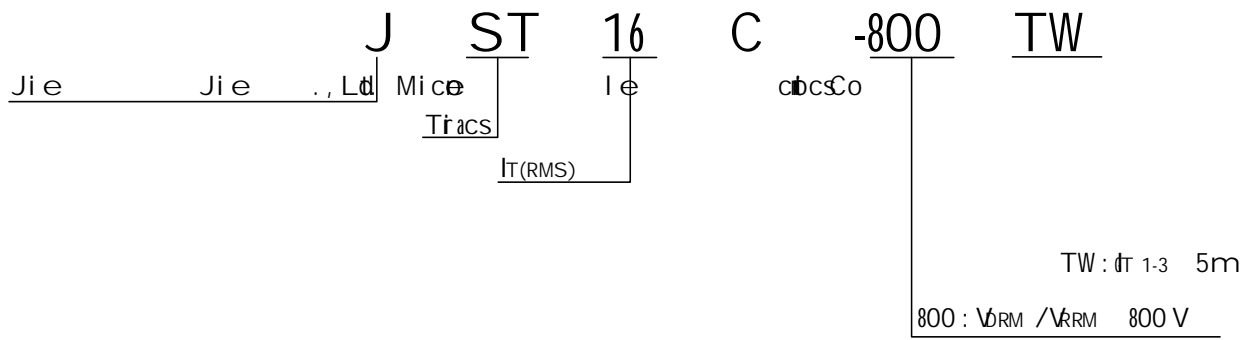
Parameter	Symbol	Value	Unit
Storage temperature	T_s	-40-150	$^{\circ}C$
Operating temperature	T_j	-40-125	$^{\circ}C$
Reverse peak current (T _{ak})			

P_e ($T_j = 25^\circ C$)	V_p	3	kV
---------------------------------	-------	---	----

ELECTRICAL CHARACTERISTICS

Symbol	Test Condition	Quadrant	Value	Unit	
I_{GT}	$V_D = 12V$ $R_L = 33\Omega$	- -	MAX .	5	m
		- -	MAX .	1	V
	$V_D = V_{DRM}$ $T_j = 25^\circ C$ $R_L = 3\Omega$	- -	MIN	0.2	V
I_L	$I_G = 1.2 I_{GT}$	-	MAX .	15	m
				20	
I_H	$I_T = 500mA$	A	MAX .	15	m
dV/dt	$V_D = 40V$ Gate	Op	40	c	21

ORDERING INFORMATION



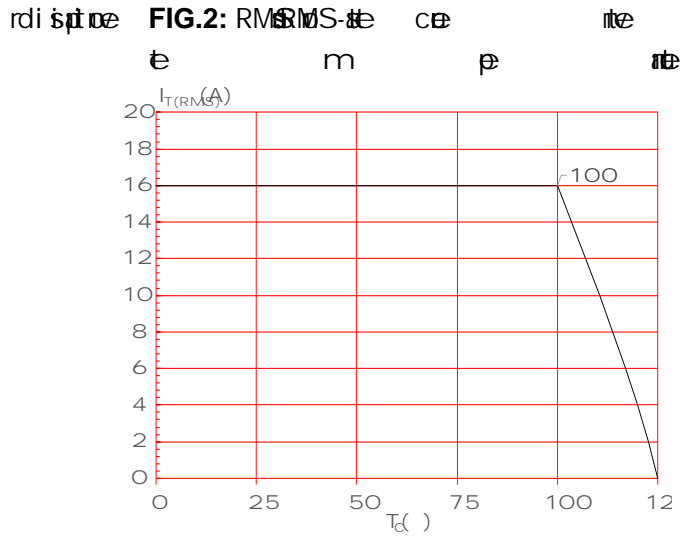
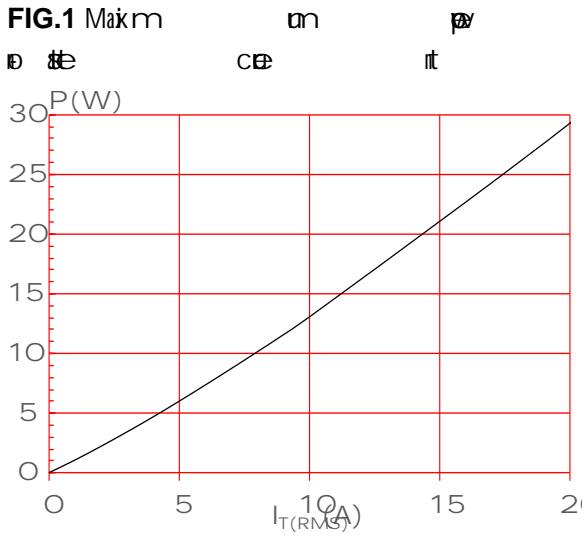
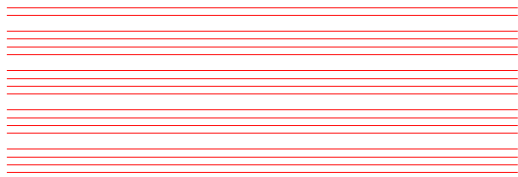
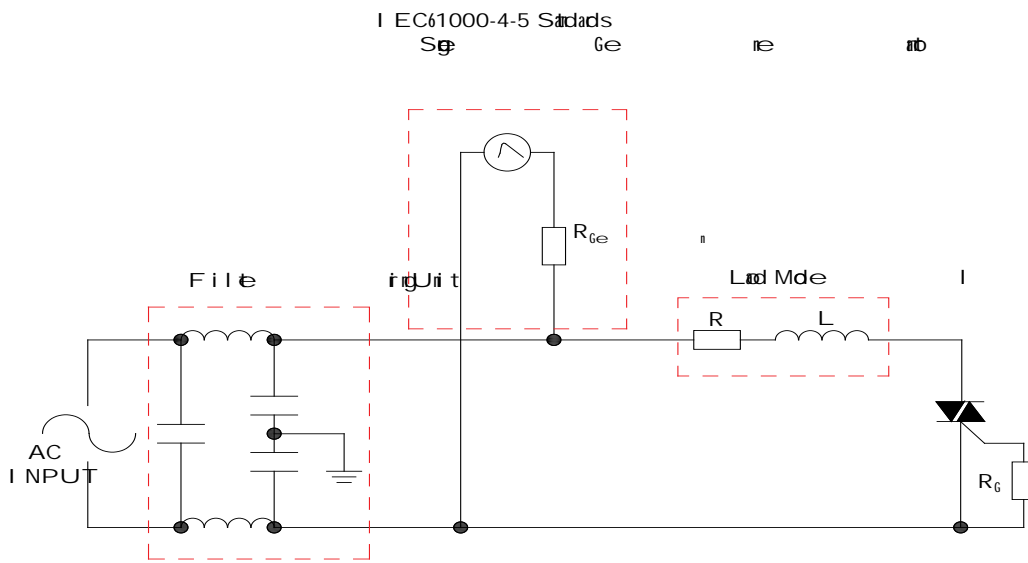


FIG.3: Sp $I_{T(RMS)}$ vs P

FIG.4: $I_{T(RMS)}$ vs T_c





SHAPING AND SOLDERING PARAMETERS

Re Interpolator pasob -e liale p de it rdel e vce

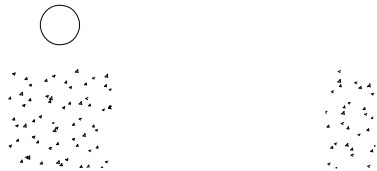
ORDERING INFORMATION

Order code	Voltage V_{DRM}/V_{RRM} (V)	IGT(mA)	Package	Base qty. (pcs)	Delivery mode
		- -			
JST16C-800TW	800	5	TO-220C	50	Tube

Document Revision History

Date	Revision	Change
Apr 12, 2023	A.1.0	Initial release

PACKAGE MECHANICAL DATA



Information and its dissemination is the