

ELECTRICAL CHARACTERISTICS

Symbol	Parameter	Unit	Typical Value	Max. Value	Min. Value
I_G	$V_{D1} \leq V_{L3}$	A	M	0	A
				2	
V_G		A	M	1	V
V_D	$V_{D1} \leq V_{Tj2}$ R_{L3}	A	M	0	V
I_L	$I_G = 2 I_G$	A	M	5	A
				2	
I_H	$I_{T1} \leq I_H$	A	M	0	A
V_{D1}	$V_{D1} \leq V_{Tj2}$	V	M	0	V
V_{D2}	$V_{D2} \leq V_{Tj2}$	V	M	6	9 V
t_b	$I_G 4 \leq I_A 2 \leq I_R 2$	s	T.P	3	s
t_b	T_{j2}	s		0	

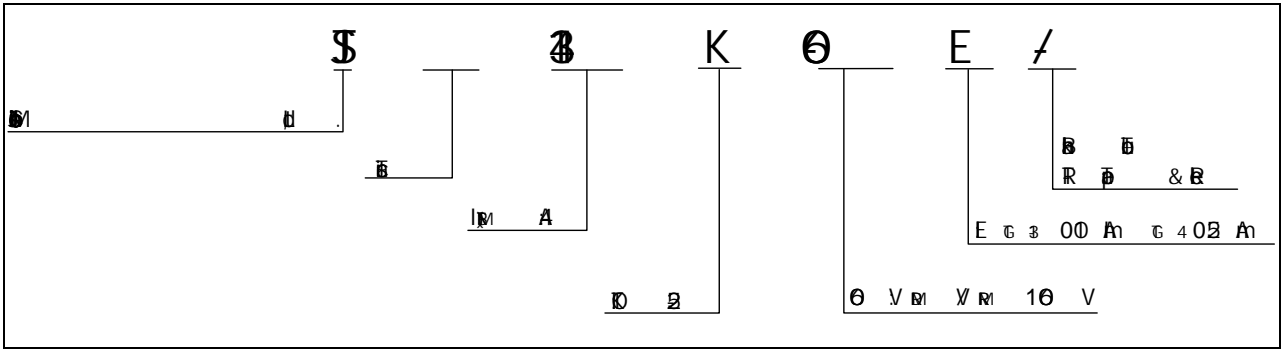
STATIC CHARACTERISTICS

Symbol	Parameter	Unit	Typical Value	Max. Value	Min. Value
V_{IM}	$I_{IM} \leq I_{A p0} \leq I_S$	V	T_{j2}	1.5	V
V_D	$I_{j1} \leq I_{j2}$	V	$T_{j1} \leq I_{j2}$	0.92	V
R_D	$I_{j1} \leq I_{j2}$	P	$T_{j1} \leq I_{j2}$	0	P
I_{IM}	$V_{D1} \leq V_{DM} \leq V_{RV} \leq V_{RM}$	A	T_{j2}	5	A
I_{RM}		A	$T_{j1} \leq I_{j2}$	0	A

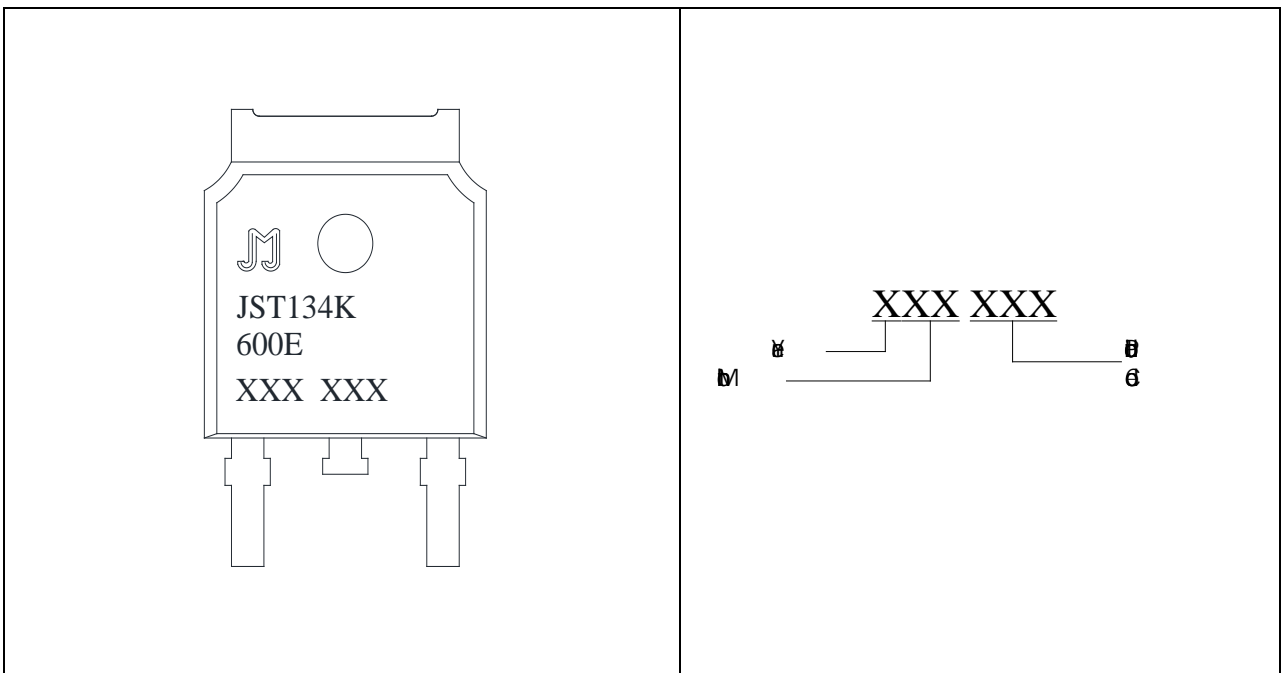
THERMAL RESISTANCES

Symbol	Parameter	Unit	Typical Value	Max. Value	Min. Value
$R_{\theta-jc}$	$R_{\theta-jc}$	$W^{-1}C$		70	$W^{-1}C$
$R_{\theta-ja}$	$R_{\theta-ja}$	$W^{-1}C$		0	$W^{-1}C$

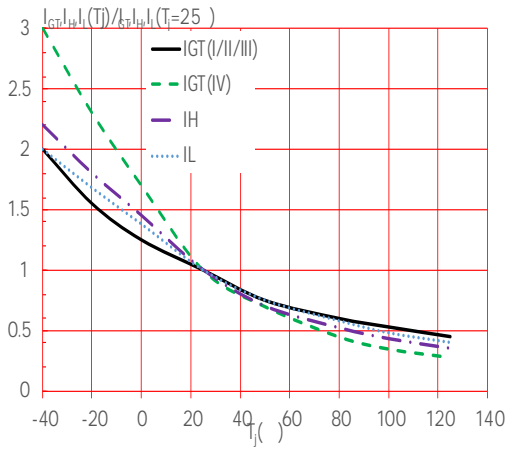
ORDERING INFORMATION

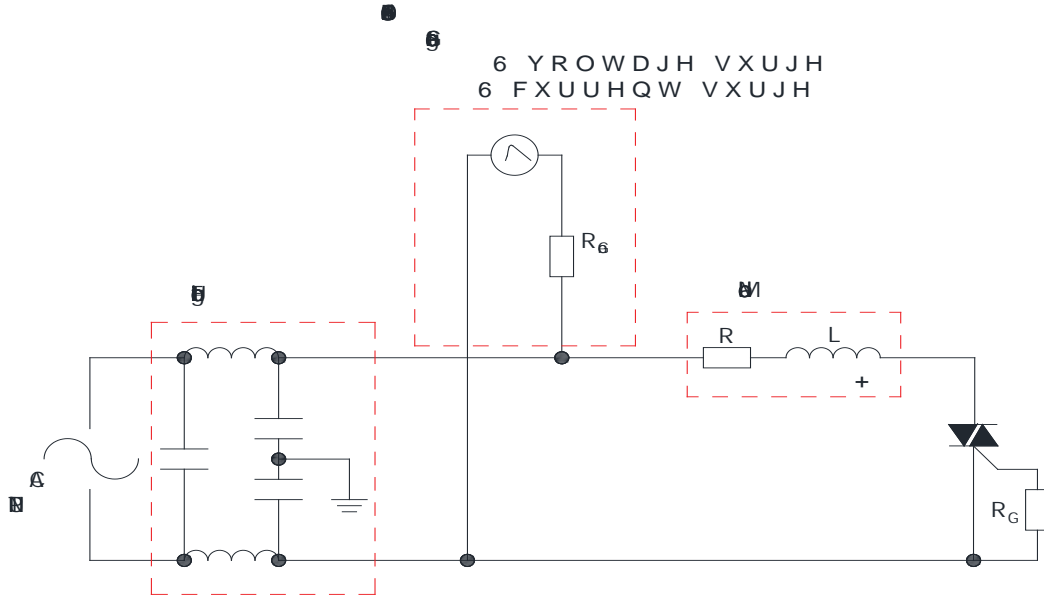


MARKING



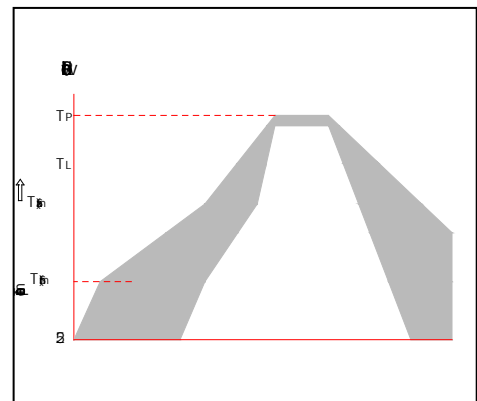
Ⓜ
Ⓜ
Ⓜ





SOLDERING PARAMETERS

Solder		Temperature (°C)
Solder	Pre-heat (°C)	150
	Heating (°C)	200
	Temperature	250-300
Soldering time (s)		3-5
Temperature of the soldering iron		300
Solder	Pre-heat (°C)	150
	Heating (°C)	200
Soldering power (W)		20-30
Soldering temperature (°C)		250-300
Soldering time (s)		3-5
Soldering power (W)		20-30
Soldering temperature (°C)		250-300
Soldering time (s)		3-5
Soldering power (W)		20-30
Soldering temperature (°C)		250-300
Soldering time (s)		3-5



ORDERING INFORMATION

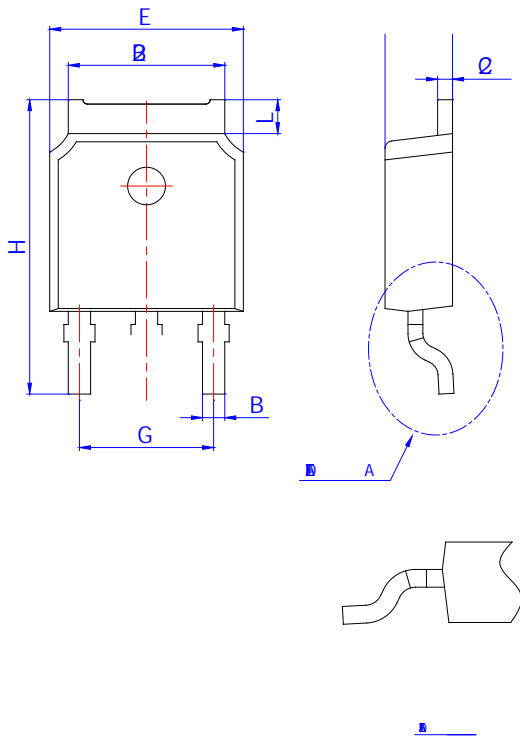
0	V _{BI} V _{RI} V	E A)		0 -2	0	0
		- -				
S B -0	0	0	2	0 -2	0	0
S B -0 -R					2 0	0

&

0 0 0

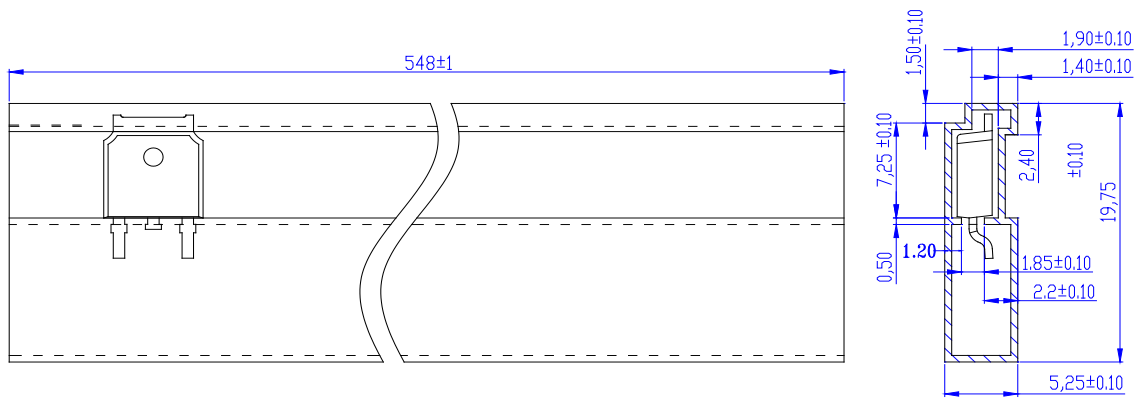
0	0	0
A .140	A 10	0

PACKAGE MECHANICAL DATA



R	b					
	M			b		
	M	Typ	M	M	Typ	M
A	0		0	0		0
B	0		0	0		0
B	0		0	0		0
B	0		0	0		0
C	0		0	0		0
D	0		0	0		0
D						
E	0		0	0		0
E	0			0		
G	0		0	0		0
H	0		0	0		0
L	0		0	0		0
L	0		0	0		0
V		7			7	
V	0		0	0		0

DELIVERY MODE



0
0
0
0
0
0
0
0
0
0
0

0 . 0

0 0 0 0 0 0 0 0 0 0 0 0



0 3 0

0 0

0 0