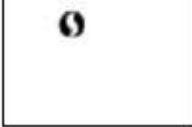
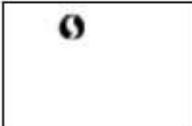
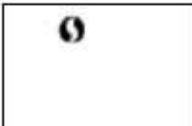
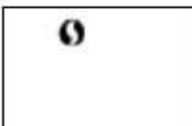
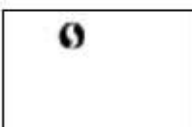
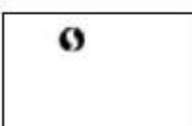
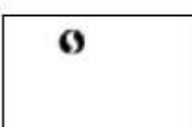
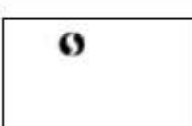
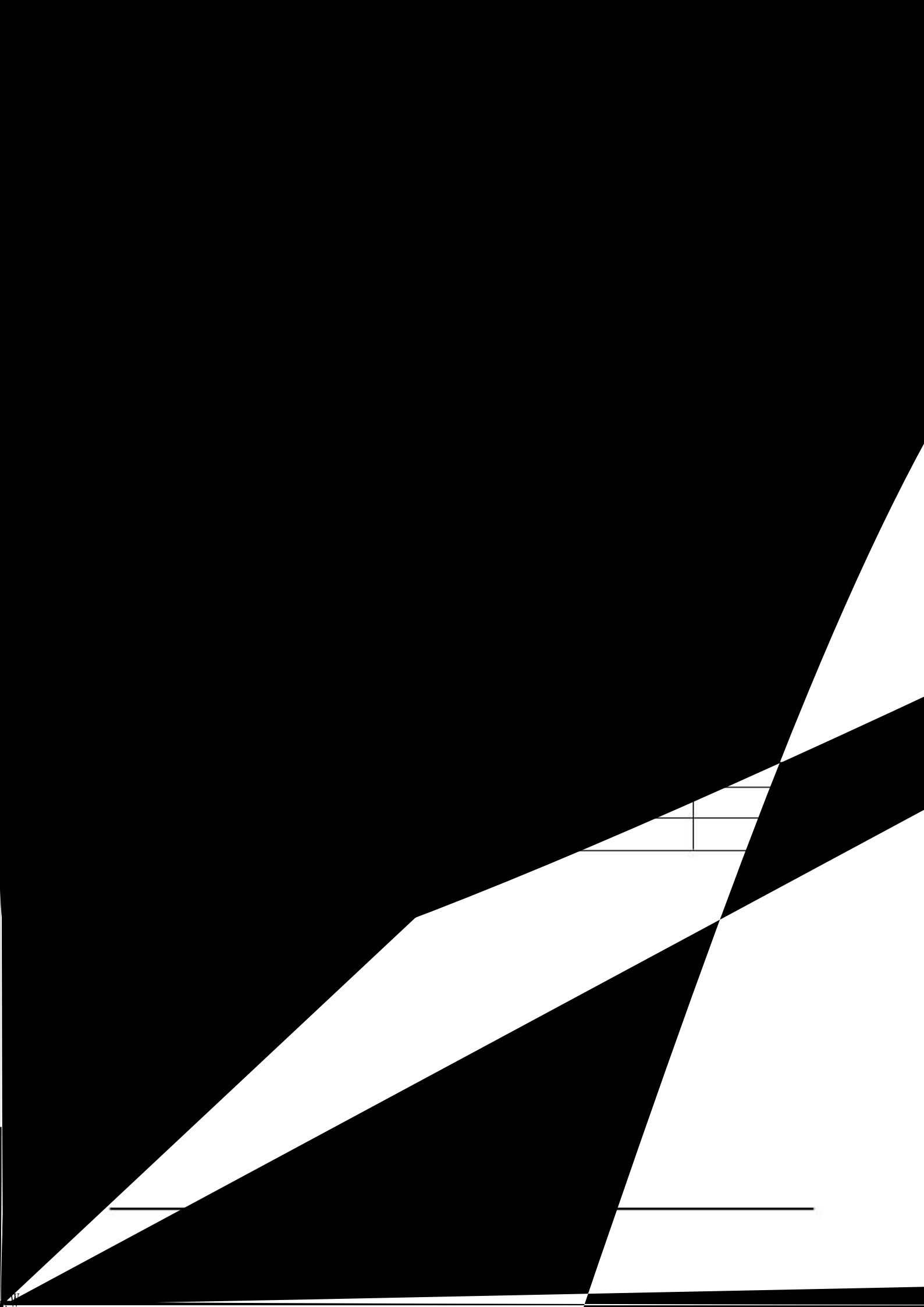
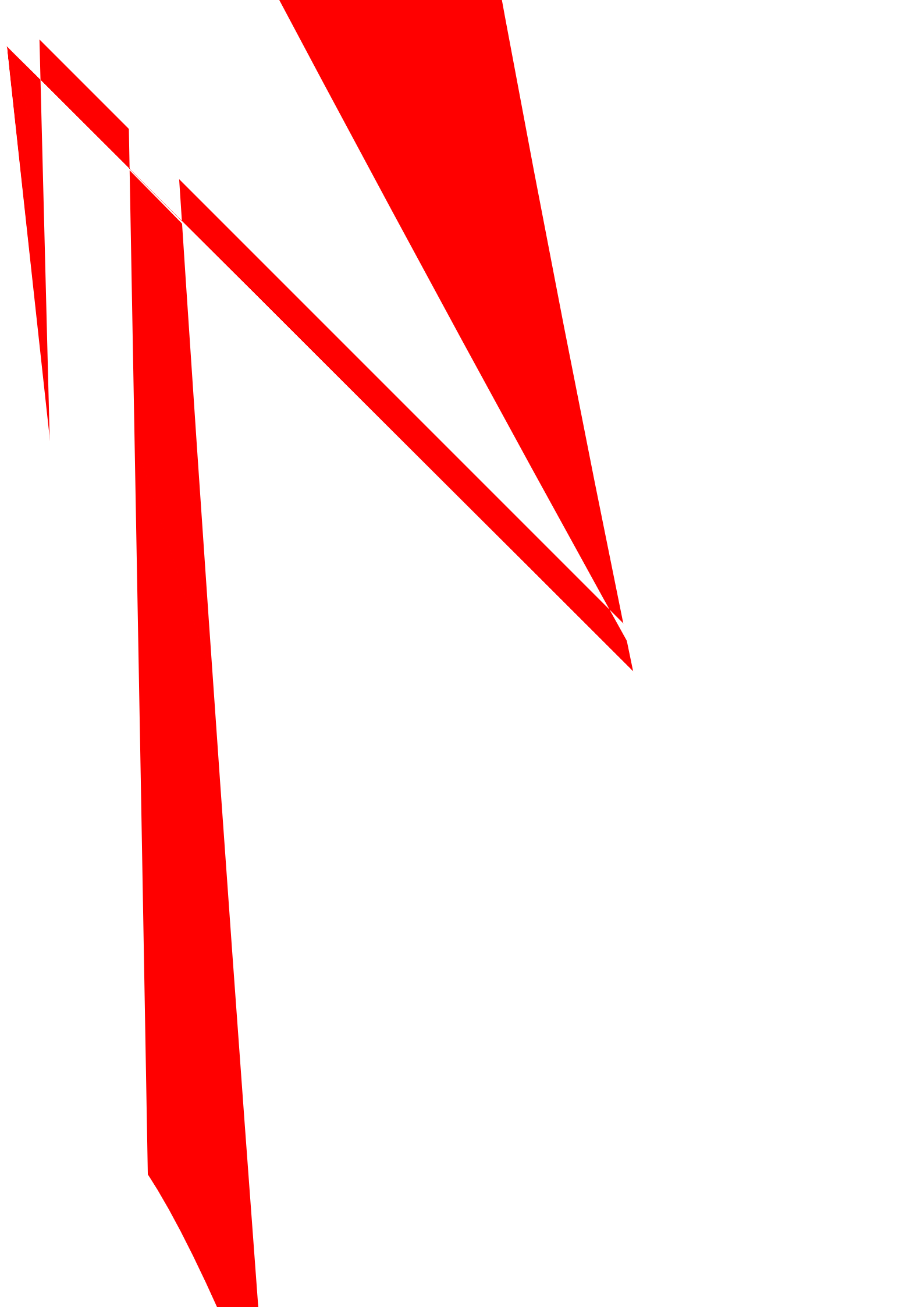


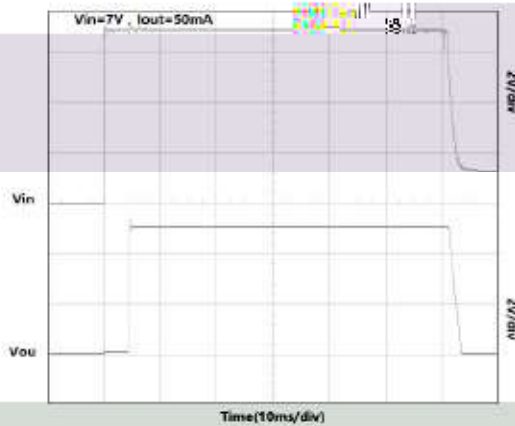
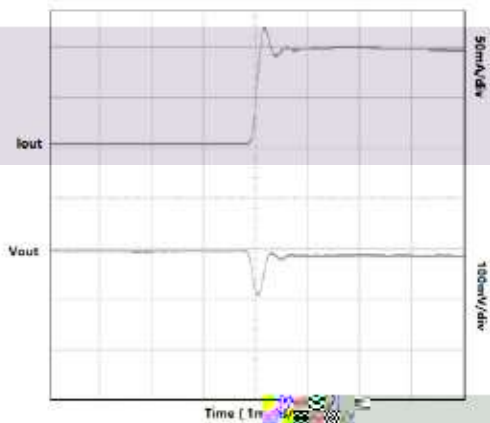
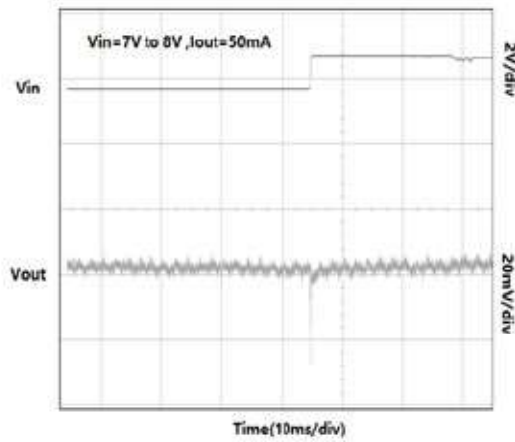
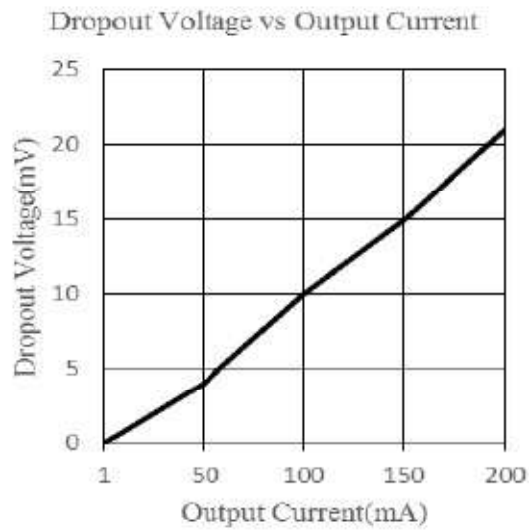
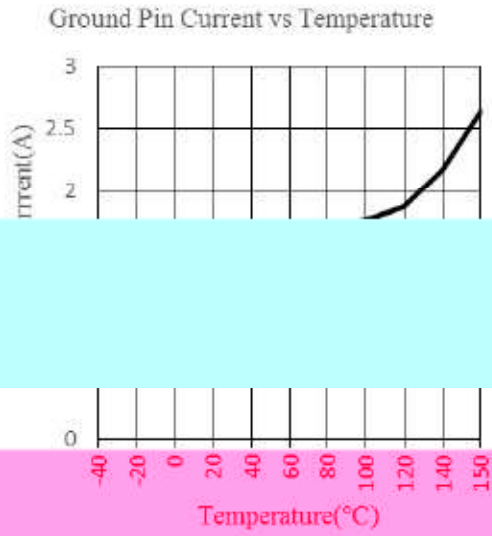
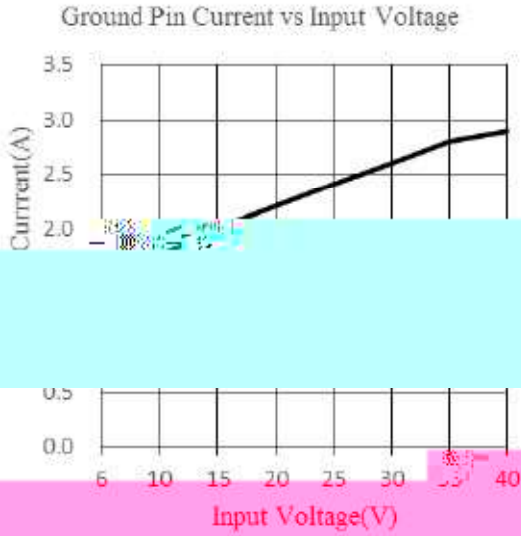
订货信息

| 产品名 | 订货信息 | 封装形式 | 打印标记 | 装料形式 | 最小包装数 |
|--------|---------|----------|---|------|-------|
| JD652H | JD652HN | SOT89-2L |  | 编带 | 1k |
| JD653H | JD653HN | SOT89-2L |  | 编带 | 1k |
| JD653H | JD653HN | SOT89-2L |  | 编带 | 1k |
| JD656H | JD656HN | SOT89-2L |  | 编带 | 1k |
| JD654H | JD654HN | SOT89-2L |  | 编带 | 1k |
| JD654H | JD654HN | SOT89-2L |  | 编带 | 1k |
| JD655H | JD655HN | SOT89-2L |  | 编带 | 1k |
| JD659H | JD659HN | SOT89-2L |  | 编带 | 1k |



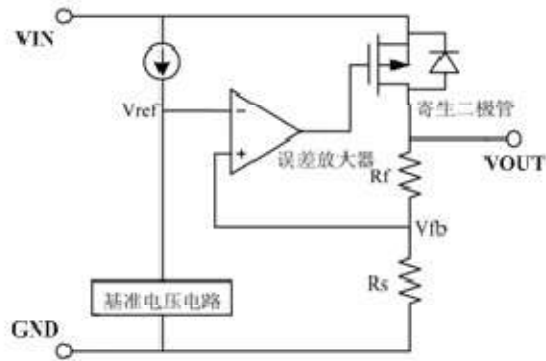


特性曲



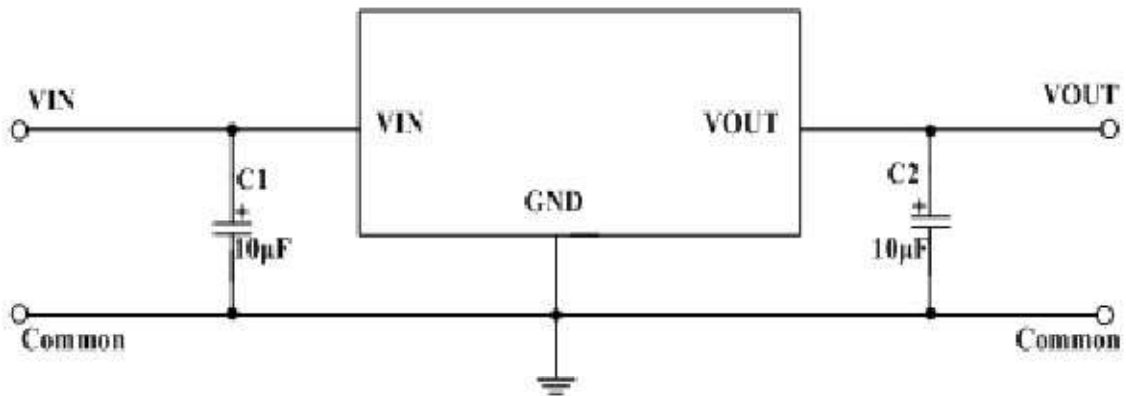
应用说明

误差



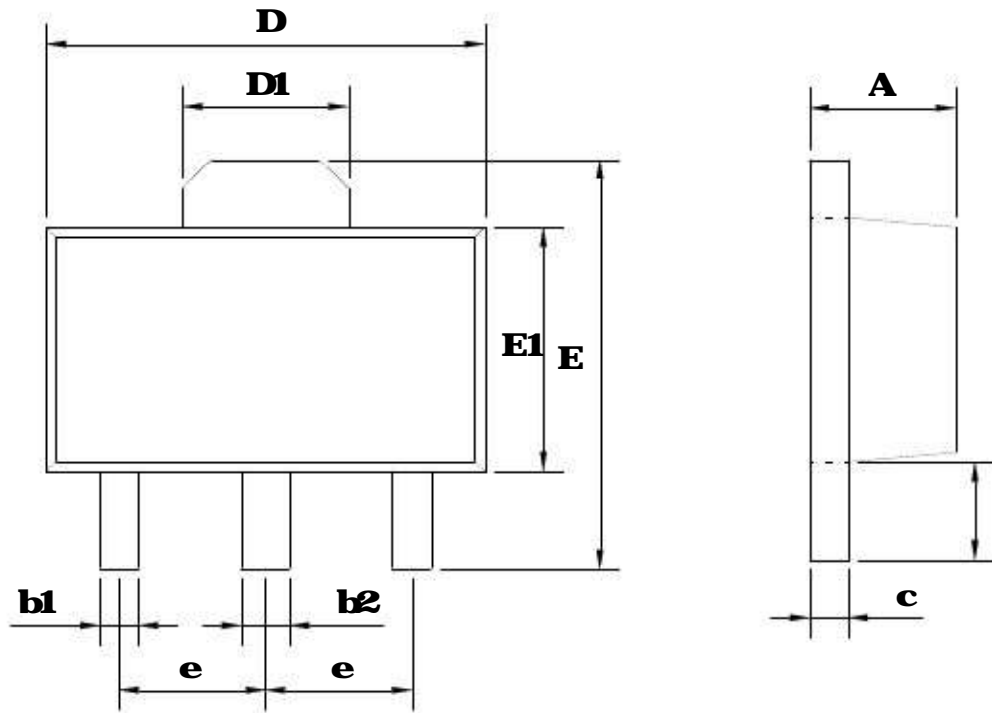
VIN 和 **VOUT** 脚位附近。

- 2 电路内部使用了相位补偿电路和利用输出电容的 **ESR** 来补偿。所以输出到地一定要接大于 2.2 μ F 的电容器，推荐使用钽电容。
- 3 注



封装外形图和尺寸

SO189L



| | | |
|--|--|--|
| | | |
| | | |
| | | |
| | | |
| | | |
| | | |
| | | |
| | | |
| | | |
| | | |

| | | |
|--|--|--|
| | | |
| | | |